



**SEACRAFT WATERMAKERS<sup>®</sup>**

*The Source of Life Meets the Power of Technology...*

*Water for life*

## The source of life is now more accessible than ever;

Water is the most strategic resource for sustaining life;

At Seacraft Watermakers, our advanced engineering solutions transform seawater into a reliable and continuous source of life. We go beyond water production, delivering technology-driven solutions that safeguard quality of life at sea and wherever fresh water is essential.

Local Design, Global Standards;

The core strength of Seacraft systems is our proprietary software and control technology, developed entirely in-house. From intuitive user interfaces to the sophisticated internal mechanisms, every component is meticulously engineered to maximize efficiency in marine environments. This integrated approach ensures exceptional ease of operation, reliability, and long-term performance, even under the most demanding conditions.

Uncompromising Quality

Throughout every stage of production, we employ only first-class materials and the highest standards of workmanship. Manufactured to meet international standards, our systems provide safe, reliable, and durable solutions across a broad spectrum of marine applications, from small yachts to large vessels.

Our Vision;

To become a globally trusted brand in water production technologies and to make access to clean water easier for everyone.

Our Mission;

to enhance life at sea by providing our customers with the most reliable, intelligent, and user-friendly water production systems.



# Our Certifications



# SCW-350 Pro Compact



## SMART CONTROL & ADVANCED USER INTERFACE

THE 5-INCH TOUCHSCREEN PANEL OFFERS AN INTUITIVE AND USER-FRIENDLY EXPERIENCE, ENSURING EFFORTLESS CONTROL AND MANAGEMENT OF THE SYSTEM.



## COMPLETE CONTROL WITH ADJUSTABLE OPERATING TIME

CUSTOMIZE THE OPERATING TIME TO SUIT YOUR NEEDS. THE SYSTEM OPERATES EXACTLY WHEN YOU NEED IT AND FOR AS LONG AS YOU CHOOSE

- DIGITAL AND ANALOG PRESSURE MONITORING
- WATER PRODUCTION INDICATOR
- WATER QUALITY INDICATOR
- AUTOMATIC BACKWASH
- ADJUSTABLE BACKWASH DURATION
- ADJUSTABLE OPERATING TIME

## STATE-OF-THE-ART SEAWATER SENSORS FOR COMPLETE PROTECTION

- LOW PRESSURE PROTECTION
- HIGH PRESSURE PROTECTION
- AUTOMATIC SALINITY REJECTION
- OPERATIONAL SAFETY SYSTEM (IF A HOSE FAILURE, MEMBRANE VESSEL DAMAGE, OR ANY COMPARABLE MALFUNCTION OCCURS DURING OPERATION, THE SYSTEM AUTOMATICALLY STOPS, PREVENTING WATER INGRESS AND SAFEGUARDING THE VESSEL AGAINST FLOODING.)



## ROBUST DESIGN

MANUFACTURED FROM STAINLESS STEEL, OUR ERGONOMICALLY DESIGNED ENCLOSURES ARE PROTECTED BY A FLAME-RETARDANT ELECTROSTATIC POWDER COATING, DELIVERING EXCEPTIONAL CORROSION RESISTANCE. BUILT TO ENDURE THE TOUGHEST MARINE CONDITIONS, THEY OFFER OUTSTANDING DURABILITY AND LONG SERVICE LIFE.

## SOFT STARTER:

SMART SOFT STARTER TECHNOLOGY: SMOOTH START-UP, MAXIMUM PROTECTION

BY INTELLIGENTLY CONTROLLING MOTOR START-UP, THE SOFT STARTER MINIMIZES ELECTRICAL AND MECHANICAL STRESS, RESULTING IN SMOOTHER OPERATION, GREATER RELIABILITY, IMPROVED SAFETY, AND A LONGER SERVICE LIFE FOR THE ENTIRE SYSTEM.

MODEL	SCW-350 Pro Compact
Operating Voltage	220V 50HZ
Total Current	16,3 A
Total Power	3,6 Kw
Operating Pressure	50-55 BAR
Production Quantity	350 LT/H
Production Quantity	8400 LT/D
Seawater Inlet	3/4"
Tank Inlet	12mm
Waste Water Out	12mm
Filter Housing Dimensions	4040-2 1350mm
Casing Dimensions (L*H*W)	785-330-380 mm
Weight	85 KG
Engine Speed	1450 RPM
Sound Level	75DB

## DUAL AUTOMATION SYSTEM – DURABILITY WITHOUT LIMITS

ENGINEERED FOR THE TOUGHEST MARINE CONDITIONS, THE DUAL AUTOMATION SYSTEM PROVIDES ALTERNATIVE CONTROL METHODS THROUGH BOTH THE DIGITAL TOUCHSCREEN AND TRADITIONAL ANALOG INSTRUMENTS. THIS REDUNDANT DESIGN GUARANTEES MAXIMUM OPERATIONAL RELIABILITY AND CONTINUOUS WATER PRODUCTION, ENSURING UNINTERRUPTED PERFORMANCE WHENEVER IT MATTERS MOST.



SEACRAFT WATERMAKERS®



# SCW-350 Pro Compact



# SCW-350 Pro Moduler



## COMPACT, ERGONOMIC AND DURABLE MODULAR DESIGN FOR EVERY VESSEL

CRAFTED FROM STAINLESS STEEL, OUR ERGONOMICALLY DESIGNED ENCLOSURES FEATURE A FLAME-RETARDANT ELECTROSTATIC POWDER COATING THAT ENSURES SUPERIOR CORROSION RESISTANCE. ENGINEERED FOR THE TOUGHEST MARINE CONDITIONS, THEY OFFER OUTSTANDING DURABILITY AND LONG-TERM RELIABILITY.

## SOFT STARTER:

### SMART SOFT STARTER TECHNOLOGY: SMOOTH START-UP, MAXIMUM PROTECTION

BY INTELLIGENTLY CONTROLLING MOTOR START-UP, THE SOFT STARTER MINIMIZES ELECTRICAL AND MECHANICAL STRESS, RESULTING IN SMOOTHER OPERATION, GREATER RELIABILITY, IMPROVED SAFETY, AND A LONGER SERVICE LIFE FOR THE ENTIRE SYSTEM.

## SMART CONTROL & ADVANCED USER INTERFACE

THE 5-INCH TOUCHSCREEN PANEL OFFERS AN INTUITIVE AND USER-FRIENDLY EXPERIENCE, ENABLING EFFORTLESS CONTROL AND MANAGEMENT OF THE SYSTEM.

### COMPLETE CONTROL WITH ADJUSTABLE OPERATING TIME

CUSTOMIZE THE OPERATING TIME TO SUIT YOUR REQUIREMENTS. THE SYSTEM OPERATES PRECISELY WHEN YOU NEED IT AND FOR AS LONG AS YOU CHOOSE, GIVING YOU COMPLETE CONTROL AND FLEXIBILITY.



- DIGITAL AND ANALOG PRESSURE MONITORING
- WATER PRODUCTION INDICATOR
- WATER QUALITY INDICATOR
- AUTOMATIC BACKWASH
- ADJUSTABLE BACKWASH DURATION
- ADJUSTABLE OPERATING TIME

## STATE-OF-THE-ART SEAWATER SENSORS FOR COMPLETE PROTECTION

- LOW PRESSURE PROTECTION
- HIGH PRESSURE PROTECTION
- AUTOMATIC SALINITY REJECTION
- OPERATIONAL SAFETY SYSTEM (IF A HOSE FAILURE, MEMBRANE VESSEL DAMAGE, OR ANY COMPARABLE MALFUNCTION OCCURS DURING OPERATION, THE SYSTEM AUTOMATICALLY STOPS, PREVENTING WATER INGRESS AND SAFEGUARDING THE VESSEL AGAINST FLOODING.)

## DUAL AUTOMATION SYSTEM

### DURABILITY WITHOUT LIMITS

ENGINEERED FOR THE TOUGHEST MARINE CONDITIONS, THE DUAL AUTOMATION SYSTEM PROVIDES ALTERNATIVE CONTROL METHODS THROUGH BOTH THE DIGITAL TOUCHSCREEN AND TRADITIONAL ANALOG INSTRUMENTS. THIS REDUNDANT DESIGN GUARANTEES MAXIMUM OPERATIONAL RELIABILITY AND CONTINUOUS WATER PRODUCTION, ENSURING UNINTERRUPTED PERFORMANCE WHENEVER IT MATTERS MOST.



Electric Motor



High-Pressure Pump



Low-Pressure Feed Pump



Sediment Filters



Dolomite Filters



Membran Housing

MODEL	SCW-350 Pro Moduler
Operating Voltage	220V 50HZ
Total Current	16,3 A
Total Power	3,6 Kw
Operating Pressure	50-55 BAR
Production Quantity	350 LT/H
Production Quantity	8400 LT/D
Seawater Inlet	3/4"
Tank Inlet	12mm
Waste Water Out	12mm
Filter Housing Dimensions	4040-2 1350mm
Casing Dimensions (L*H*W)	400-350-150 mm
Weight	75 KG
Engine Speed	1450 RPM
Sound Level	75DB



SEACRAFT WATERMAKERS®



**SCW-350** Pro Moduler

# SCW-150 Pro Compact



## SMART CONTROL & ADVANCED USER INTERFACE

THE 5-INCH TOUCHSCREEN PANEL OFFERS AN INTUITIVE AND USER-FRIENDLY EXPERIENCE, ENSURING EFFORTLESS CONTROL AND MANAGEMENT OF THE SYSTEM.



### COMPLETE CONTROL WITH ADJUSTABLE OPERATING TIME

CUSTOMIZE THE OPERATING TIME TO SUIT YOUR NEEDS. THE SYSTEM OPERATES EXACTLY WHEN YOU NEED IT AND FOR AS LONG AS YOU CHOOSE

- DIGITAL AND ANALOG PRESSURE MONITORING
- WATER PRODUCTION INDICATOR
- WATER QUALITY INDICATOR
- AUTOMATIC BACKWASH
- ADJUSTABLE BACKWASH DURATION
- ADJUSTABLE OPERATING TIME

### STATE-OF-THE-ART SEAWATER SENSORS FOR COMPLETE PROTECTION

- LOW PRESSURE PROTECTION
- HIGH PRESSURE PROTECTION
- AUTOMATIC SALINITY REJECTION
- OPERATIONAL SAFETY SYSTEM  
(IF A HOSE FAILURE, MEMBRANE VESSEL DAMAGE, OR ANY COMPARABLE MALFUNCTION OCCURS DURING OPERATION, THE SYSTEM AUTOMATICALLY STOPS, PREVENTING WATER INGRESS AND SAFEGUARDING THE VESSEL AGAINST FLOODING.)



## ROBUST DESIGN

MANUFACTURED FROM STAINLESS STEEL, OUR ERGONOMICALLY DESIGNED ENCLOSURES ARE PROTECTED BY A FLAME-RETARDANT ELECTROSTATIC POWDER COATING, DELIVERING EXCEPTIONAL CORROSION RESISTANCE. BUILT TO ENDURE THE TOUGHEST MARINE CONDITIONS, THEY OFFER OUTSTANDING DURABILITY AND LONG SERVICE LIFE.

## SOFT STARTER :

SMART SOFT STARTER TECHNOLOGY: SMOOTH START-UP, MAXIMUM PROTECTION

BY INTELLIGENTLY CONTROLLING MOTOR START-UP, THE SOFT STARTER MINIMIZES ELECTRICAL AND MECHANICAL STRESS, RESULTING IN SMOOTHER OPERATION, GREATER RELIABILITY, IMPROVED SAFETY, AND A LONGER SERVICE LIFE FOR THE ENTIRE SYSTEM.

MODEL	SCW-1500 Pro Compact
Operating Voltage	220V 50HZ
Total Current	12,7 A
Total Power	2,8 Kw
Operating Pressure	50-55 BAR
Production Quantity	150 LT/H
Production Quantity	3600 LT/D
Sea water Inlet	3/4"
Tank Inlet	12mm
Waste Water Out	12mm
Filter Housing Dimensions	4040-1 1350mm
Casing Dimensions (L*H*W)	785-330-380 mm
Weight	67 KG
Engine Speed	1450 RPM
Sound Level	75DB

## DUAL AUTOMATION SYSTEM – DURABILITY WITHOUT LIMITS

ENGINEERED FOR THE TOUGHEST MARINE CONDITIONS, THE DUAL AUTOMATION SYSTEM PROVIDES ALTERNATIVE CONTROL METHODS THROUGH BOTH THE DIGITAL TOUCHSCREEN AND TRADITIONAL ANALOG INSTRUMENTS. THIS REDUNDANT DESIGN GUARANTEES MAXIMUM OPERATIONAL RELIABILITY AND CONTINUOUS WATER PRODUCTION, ENSURING UNINTERRUPTED PERFORMANCE WHENEVER IT MATTERS MOST.



SEACRAFT WATERMAKERS®



# SCW-150 Pro Compact



# SCW-150 Pro Moduler



## SMART CONTROL & ADVANCED USER INTERFACE

THE 5-INCH TOUCHSCREEN PANEL OFFERS AN INTUITIVE AND USER-FRIENDLY EXPERIENCE, ENABLING EFFORTLESS CONTROL AND MANAGEMENT OF THE SYSTEM.

### COMPLETE CONTROL WITH ADJUSTABLE OPERATING TIME

CUSTOMIZE THE OPERATING TIME TO SUIT YOUR REQUIREMENTS. THE SYSTEM OPERATES PRECISELY WHEN YOU NEED IT AND FOR AS LONG AS YOU CHOOSE, GIVING YOU COMPLETE CONTROL AND FLEXIBILITY.



- DIGITAL AND ANALOG PRESSURE MONITORING
- WATER PRODUCTION INDICATOR
- WATER QUALITY INDICATOR
- AUTOMATIC BACKWASH
- ADJUSTABLE BACKWASH DURATION
- ADJUSTABLE OPERATING TIME

## STATE-OF-THE-ART SEAWATER SENSORS FOR COMPLETE PROTECTION

- LOW PRESSURE PROTECTION
- HIGH PRESSURE PROTECTION
- AUTOMATIC SALINITY REJECTION
- OPERATIONAL SAFETY SYSTEM (IF A HOSE FAILURE, MEMBRANE VESSEL DAMAGE, OR ANY COMPARABLE MALFUNCTION OCCURS DURING OPERATION, THE SYSTEM AUTOMATICALLY STOPS, PREVENTING WATER INGRESS AND SAFEGUARDING THE VESSEL AGAINST FLOODING.)

## DUAL AUTOMATION SYSTEM

### DURABILITY WITHOUT LIMITS

ENGINEERED FOR THE TOUGHEST MARINE CONDITIONS, THE DUAL AUTOMATION SYSTEM PROVIDES ALTERNATIVE CONTROL METHODS THROUGH BOTH THE DIGITAL TOUCHSCREEN AND TRADITIONAL ANALOG INSTRUMENTS. THIS REDUNDANT DESIGN GUARANTEES MAXIMUM OPERATIONAL RELIABILITY AND CONTINUOUS WATER PRODUCTION, ENSURING UNINTERRUPTED PERFORMANCE WHENEVER IT MATTERS MOST.

MODEL	SCW-150 Pro Moduler
Operating Voltage	220V 50HZ
Total Current	12,7A
Total Power	2,8 Kw
Operating Pressure	50-55 BAR
Production Quantity	150 LT/H
Production Quantity	3600 LT/D
Sea water Inlet	3/4"
Tank Inlet	12mm
Waste Water Out	12mm
Filter Housing Dimensions	4040-1 1350mm
Casing Dimensions (L*H*W)	400-350-150 mm
Weight	57 KG
Engine Speed	1450 RPM
Sound Level	75DB

## COMPACT, ERGONOMIC AND DURABLE MODULAR DESIGN FOR EVERY VESSEL

CRAFTED FROM STAINLESS STEEL, OUR ERGONOMICALLY DESIGNED ENCLOSURES FEATURE A FLAME-RETARDANT ELECTROSTATIC POWDER COATING THAT ENSURES SUPERIOR CORROSION RESISTANCE. ENGINEERED FOR THE TOUGHEST MARINE CONDITIONS, THEY OFFER OUTSTANDING DURABILITY AND LONG-TERM RELIABILITY.

## SOFT STARTER:

### SMART SOFT STARTER TECHNOLOGY: SMOOTH START-UP, MAXIMUM PROTECTION

BY INTELLIGENTLY CONTROLLING MOTOR START-UP, THE SOFT STARTER MINIMIZES ELECTRICAL AND MECHANICAL STRESS, RESULTING IN SMOOTHER OPERATION, GREATER RELIABILITY, IMPROVED SAFETY, AND A LONGER SERVICE LIFE FOR THE ENTIRE SYSTEM.



Electric Motor



High-Pressure Pump



Low-Pressure Feed Pump



Sediment Filters



Dolomite Filters



Membran Housing



SEACRAFT WATERMAKERS®



**SCW-150** Pro Moduler

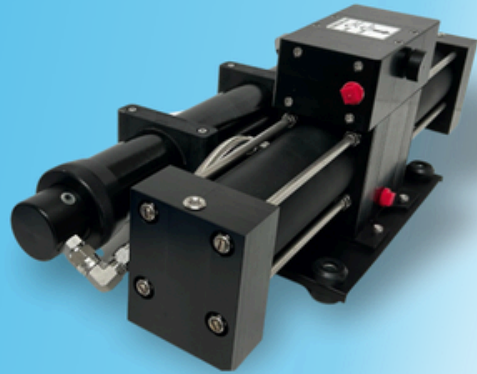
# SCW-30

DC  
12V

DC  
24V



SEACRAFT WATERMAKERS®



## ADVANCED NEXT-GENERATION CLARK PUMP

POWERED BY THE LATEST HYDRAULICALLY ASSISTED CLARK PUMP INTENSIFIER AND ENERGY RECOVERY TECHNOLOGY, OUR SYSTEM SETS NEW INDUSTRY BENCHMARKS FOR EFFICIENCY, PERFORMANCE, AND ENERGY SAVINGS.

## SUPERIOR PERFORMANCE THROUGH INTELLIGENT ENERGY RECOVERY

EQUIPPED WITH THE LATEST HYDRAULICALLY ASSISTED CLARK PUMP INTENSIFIER AND AN INTEGRATED ENERGY RECOVERY SYSTEM, THE SCW-30 DELIVERS EXCEPTIONAL EFFICIENCY AND PERFORMANCE, RAISING INDUSTRY STANDARDS TO A NEW LEVEL. ITS COMPACT DESIGN AND OPTIMIZED OPERATING TECHNOLOGY MAKE IT THE PERFECT CHOICE FOR INSTALLATIONS WHERE SPACE IS LIMITED BUT MAXIMUM EFFICIENCY IS REQUIRED.

## COMPACT SIZE, OUTSTANDING PERFORMANCE

THE SCW-30 COMBINES LIGHTWEIGHT CONSTRUCTION, ELEGANT MINIMALIST STYLING, AND AN ULTRA-COMPACT FOOTPRINT TO DELIVER EXCEPTIONAL VERSATILITY. ITS EASY INSTALLATION AND CONVENIENT MAINTENANCE ENSURE A SEAMLESS USER EXPERIENCE, WHILE ITS PROVEN RELIABILITY MAKES IT A TRUSTED CHOICE. FURTHERMORE, THE INTEGRATED DIAPHRAGM FEED PUMP OPTIMIZES SYSTEM PRESSURE, MAXIMIZING EFFICIENCY AND OVERALL PERFORMANCE.

MODEL	SCW-50 Pro Moduler
Operating Voltage	12V/24VDC
Total Current	10A / 5A
Total Power	120w
Operating Pressure	50-55 BAR
Production Quantity	30 LT/H
Production Quantity	720 LT/D
Sea water Inlet	3/4"
Tank Inlet	10mm
Waste Water Out	10mm
Filter Housing Dimensions	2521-1 630mm
Clark Pump Dimensions (L*H*W)	307-630-213 mm
Clark Pump Weight	14 Kg
FeedPump Dimensions(L*H*W)	247-370-245 mm
Feed Pump Weight	6,6 Kg
Sound Level	25 Db

## PRODUCE THE SOURCE OF LIFE WITH RENEWABLE ENERGY

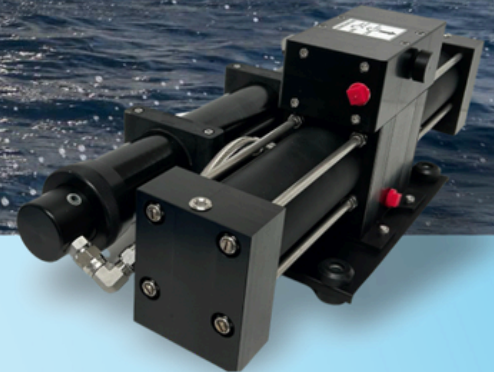
THANKS TO ITS REMARKABLY LOW POWER CONSUMPTION, THE SYSTEM CAN BE OPERATED CONFIDENTLY USING RENEWABLE ENERGY SOURCES SUCH AS SOLAR PANELS, WIND TURBINES, OR MARINE ALTERNATORS. FURTHERMORE, THE ADVANCED CLARK PUMP FEATURES AN EXTENDED-CYLINDER DESIGN THAT ENSURES NOTICEABLY QUIETER PERFORMANCE AND ENHANCED ONBOARD COMFORT.





SCW-3 

12v / 24v DC



# SCW-100

Inv Pro Moduler



Can be operated with an inverter rated at 2000 W or higher.



SEACRAFT WATERMAKERS®

## SMART CONTROL & ADVANCED USER INTERFACE

THE 5-INCH TOUCHSCREEN PANEL OFFERS AN INTUITIVE AND USER-FRIENDLY EXPERIENCE, ENABLING EFFORTLESS CONTROL AND MANAGEMENT OF THE SYSTEM.

### COMPLETE CONTROL WITH ADJUSTABLE OPERATING TIME

CUSTOMIZE THE OPERATING TIME TO SUIT YOUR REQUIREMENTS. THE SYSTEM OPERATES PRECISELY WHEN YOU NEED IT AND FOR AS LONG AS YOU CHOOSE, GIVING YOU COMPLETE CONTROL AND FLEXIBILITY.



- DIGITAL AND ANALOG PRESSURE MONITORING
- WATER PRODUCTION INDICATOR
- WATER QUALITY INDICATOR
- AUTOMATIC BACKWASH
- ADJUSTABLE BACKWASH DURATION
- ADJUSTABLE OPERATING TIME

### STATE-OF-THE-ART SEAWATER SENSORS FOR COMPLETE PROTECTION

- LOW PRESSURE PROTECTION
- HIGH PRESSURE PROTECTION
- AUTOMATIC SALINITY REJECTION
- OPERATIONAL SAFETY SYSTEM (IF A HOSE FAILURE, MEMBRANE VESSEL DAMAGE, OR ANY COMPARABLE MALFUNCTION OCCURS DURING OPERATION, THE SYSTEM AUTOMATICALLY STOPS, PREVENTING WATER INGRESS AND SAFEGUARDING THE VESSEL AGAINST FLOODING.)

### DUAL AUTOMATION SYSTEM

#### DURABILITY WITHOUT LIMITS

ENGINEERED FOR THE TOUGHEST MARINE CONDITIONS, THE DUAL AUTOMATION SYSTEM PROVIDES ALTERNATIVE CONTROL METHODS THROUGH BOTH THE DIGITAL TOUCHSCREEN AND TRADITIONAL ANALOG INSTRUMENTS. THIS REDUNDANT DESIGN GUARANTEES MAXIMUM OPERATIONAL RELIABILITY AND CONTINUOUS WATER PRODUCTION, ENSURING UNINTERRUPTED PERFORMANCE WHENEVER IT MATTERS MOST.



Electric Motor



High-Pressure Pump



Sediment Filters



Dolomite Filters



Membran Housing



MODEL	SCW-100 InvPro Moduler
Operating Voltage	220V 50HZ
Total Current	6,1 A
Total Power	1,35 Kw
Operating Pressure	50-55 BAR
Production Quantity	100 LT/H
Production Quantity	2400 LT/D
Sea water Inlet	3/4"
Tank Inlet	12mm
Waste Water Out	12mm
Filter Housing Dimensions	4040-1 1350mm
Casing Dimensions (L*H*W)	400-350-150 mm
Weight	57 KG
Engine Speed	1450 RPM
Sound Level	75DB

### COMPACT, ERGONOMIC AND DURABLE MODULAR DESIGN FOR EVERY VESSEL

CRAFTED FROM STAINLESS STEEL, OUR ERGONOMICALLY DESIGNED ENCLOSURES FEATURE A FLAME-RETARDANT ELECTROSTATIC POWDER COATING THAT ENSURES SUPERIOR CORROSION RESISTANCE. ENGINEERED FOR THE TOUGHEST MARINE CONDITIONS, THEY OFFER OUTSTANDING DURABILITY AND LONG-TERM RELIABILITY.

### SOFT STARTER:

#### SMART SOFT STARTER TECHNOLOGY: SMOOTH START-UP, MAXIMUM PROTECTION

BY INTELLIGENTLY CONTROLLING MOTOR START-UP, THE SOFT STARTER MINIMIZES ELECTRICAL AND MECHANICAL STRESS, RESULTING IN SMOOTHER OPERATION, GREATER RELIABILITY, IMPROVED SAFETY, AND A LONGER SERVICE LIFE FOR THE ENTIRE SYSTEM.



**SCW-100** Inv Pro Moduler

# SCW-500 / SCW-1000 Pro

HIGH-CAPACITY SOLUTION FOR FRESHWATER-SCARCE COASTAL AREAS, YACHTS, AND VESSELS WITH HIGH WATER DEMAND



## COMPLETE CONTROL WITH ADJUSTABLE OPERATING TIME

CUSTOMIZE THE OPERATING TIME TO SUIT YOUR REQUIREMENTS. THE SYSTEM OPERATES PRECISELY WHEN YOU NEED IT AND FOR AS LONG AS YOU CHOOSE, GIVING YOU COMPLETE CONTROL AND FLEXIBILITY.

- DIGITAL AND ANALOG PRESSURE MONITORING
- WATER PRODUCTION INDICATOR
- WATER QUALITY INDICATOR
- AUTOMATIC BACKWASH
- ADJUSTABLE BACKWASH DURATION
- ADJUSTABLE OPERATING TIME

## STATE-OF-THE-ART SEAWATER SENSORS FOR COMPLETE PROTECTION

- LOW PRESSURE PROTECTION
- HIGH PRESSURE PROTECTION
- AUTOMATIC SALINITY REJECTION
- OPERATIONAL SAFETY SYSTEM  
(IF A HOSE FAILURE, MEMBRANE VESSEL DAMAGE, OR ANY COMPARABLE MALFUNCTION OCCURS DURING OPERATION, THE SYSTEM AUTOMATICALLY STOPS, PREVENTING WATER INGRESS AND SAFEGUARDING THE VESSEL AGAINST FLOODING.)

MODEL	SCW-500	SCW-1000
Operating Voltage	380/50 hz 440/60 hz	380/50 hz 440/60 hz
Total Current	13A	17A
Total Power	4 KW	13,2 Kw
Operating Pressure	55 Bar	55 Bar
Production Quantity	500 Lt/S	1000 Lt/S
Production Quantity	12.000 Lt/G	24.000 Lt/G
Sea Water Inlet	1/4"	1/4"
Tank Inlet	1/2"	1/2"
Waste Water Out	1/2"	1/2"
Filter Housing Dimensions	4040-3	4040-6
Casing Dimensions (L*H*W)	610-350-160	610-350-160
Weight	139 Kg	275 Kg
Engine Speed	1450 rpm	1450 rpm
Sound Level	95 Db	95 Db

## ROBUST DESIGN

MANUFACTURED FROM STAINLESS STEEL, OUR ERGONOMICALLY DESIGNED ENCLOSURES ARE PROTECTED BY A FLAME-RETARDANT ELECTROSTATIC POWDER COATING, DELIVERING EXCEPTIONAL CORROSION RESISTANCE. BUILT TO ENDURE THE TOUGHEST MARINE CONDITIONS, THEY OFFER OUTSTANDING DURABILITY AND LONG SERVICE LIFE.

## SOFT STARTER:

SMART SOFT STARTER TECHNOLOGY: SMOOTH START-UP, MAXIMUM PROTECTION

BY INTELLIGENTLY CONTROLLING MOTOR START-UP, THE SOFT STARTER MINIMIZES ELECTRICAL AND MECHANICAL STRESS, RESULTING IN SMOOTHER OPERATION, GREATER RELIABILITY, IMPROVED SAFETY, AND A LONGER SERVICE LIFE FOR THE ENTIRE SYSTEM.



Electric Motor



High-Pressure Pump



Low-Pressure Feed Pump



Sand Filter



Membran Housing



SEACRAFT WATERMAKERS®





**SCW-500 / SCW-1000**



*Water for life*

## Contact

 +90 252 412 90 78

 [www.seacraftwatermakers.com](http://www.seacraftwatermakers.com)  
 [info@seacraftwatermakers.com](mailto:info@seacraftwatermakers.com)

 @seacraftwatermakers

 Tepe Mahallesi 24. Sokak No:12/A  
Marmaris - MUĞLA - TURKIYE